



## Company presentation

February 2016

Fulfill the customer's requirements supplying high quality products and services in the transmission field.

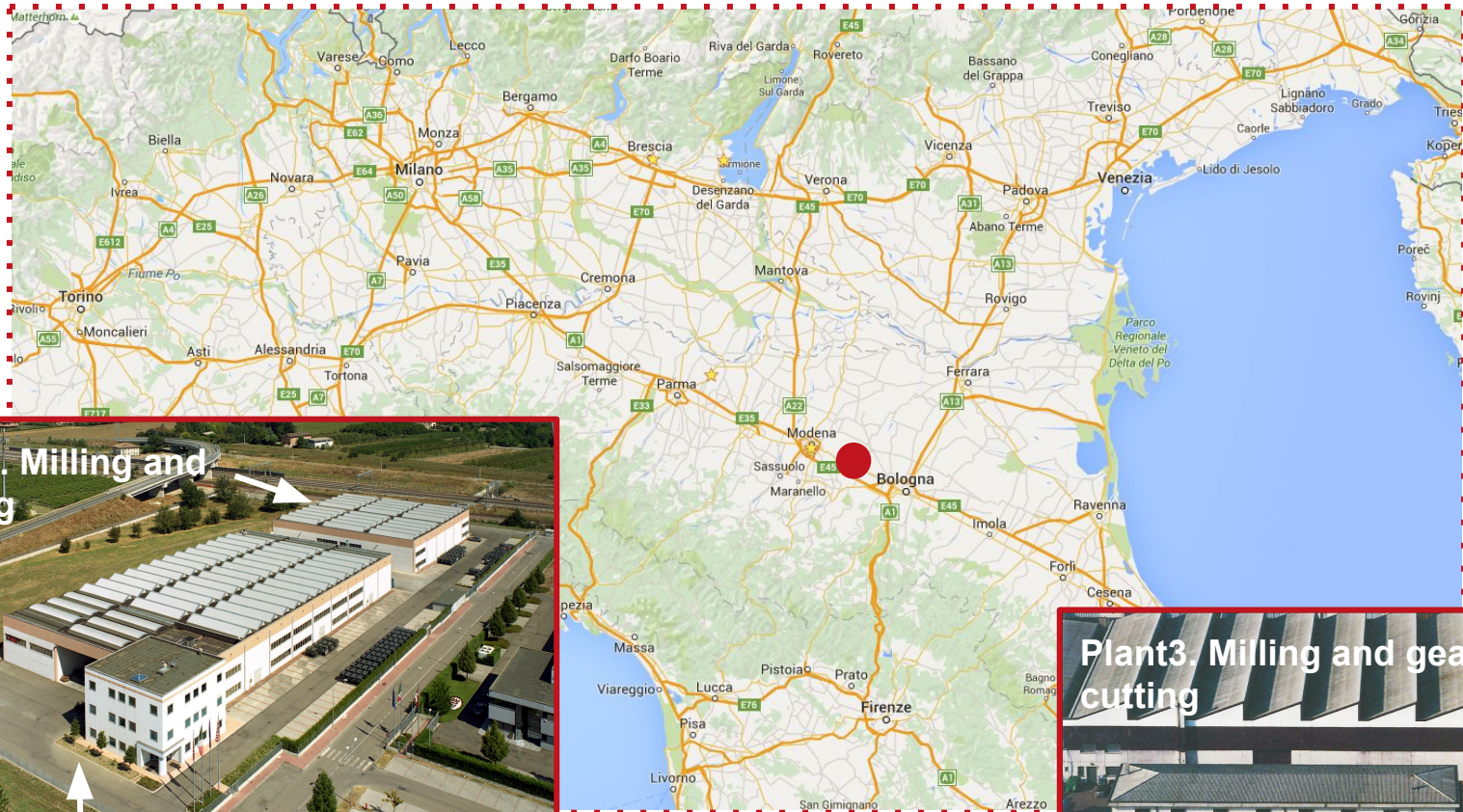
Meet customer's expectations by realizing special products, tailored to the customer, with short time-to-market using our long experience, flexibility, continuous research and technical development.

- 1973 Company foundation for production of gear reducers for tower cranes.
- 1974 First drive axle for road machinery produced.
- 1978 First drive axle for Reach-Stacker Belotti (inventor of RS) was produced.  
New manufacturing plant and offices for 3500sqm built in Castelfranco Emilia.
- 1982 First drive axles for mobile harbour cranes produced (Italgru)
- 1989 New assembly plant of 1400sqm built.
- 1990 Steer non-driven axles for RS produced.
- 1999 ISO 9001 Certification.
- 2004 Opening of the new facility of 8000sqm in Castelfranco Emilia for machining, assembly and offices
- 2015 ISO 14001 Certification

# Where we are

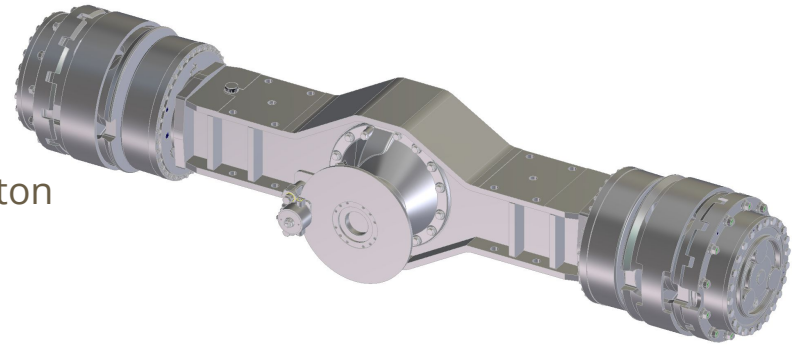
**OMCI** S.p.A.

We are located in Castelfranco Emilia, Modena - Italy



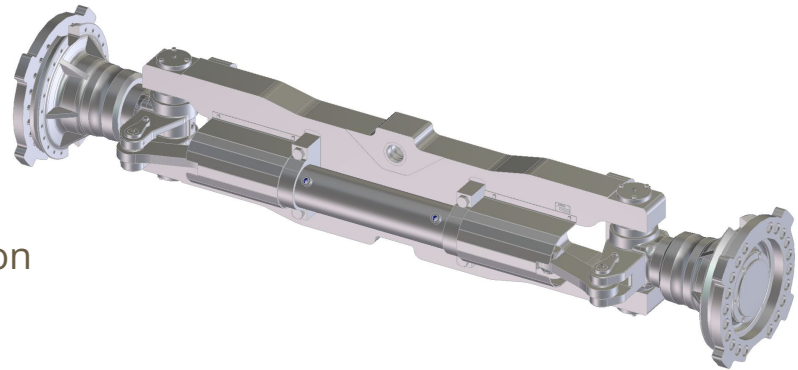
- **Planetary drive axles**  
(rigid and steering)

- Dynamic load capacity from 10ton to 160ton
- Outboard brakes series
- Inboard brakes series



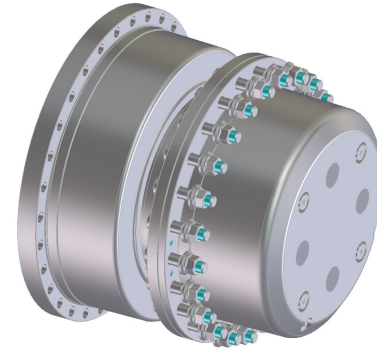
- **Steering non-driven axles**

- Dynamic load capacity from 10ton to 50ton



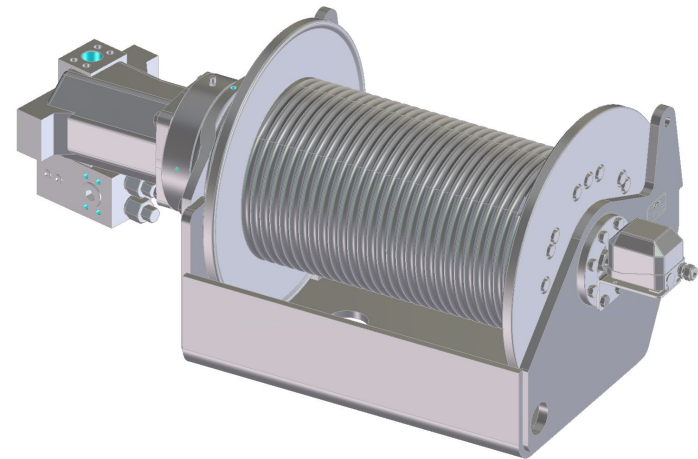
- **Drive wheels**

- Dynamic load capacity from 10ton to 30ton



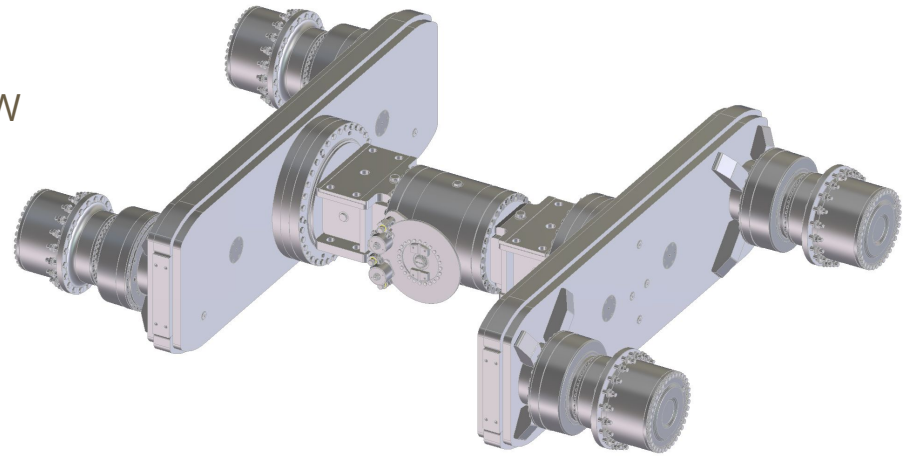
- **Hoisting winches**

- Line pull from 3ton to 10ton

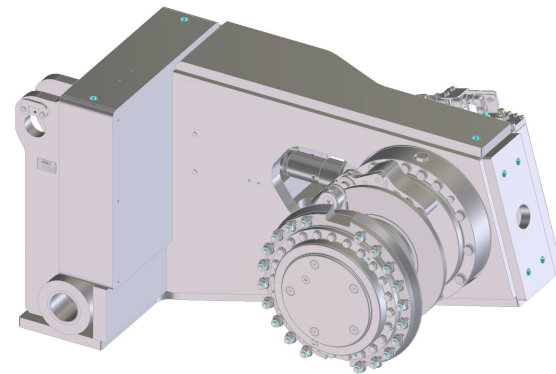




- **Boogie axles**
  - For motorgrader from 75kW to 400kW



- **Special drive systems**



## YEAR 2015

Turnover	8.5 M€
Employees	43
Plants	3
Axles produced	751
Reducers, winches and other products	119



# Our Main Customers

**omci** S.p.A.



# Our Main Customers

**OMCI** S.p.A.





# ISO 9001:2008



# ISO 14001:2004

