

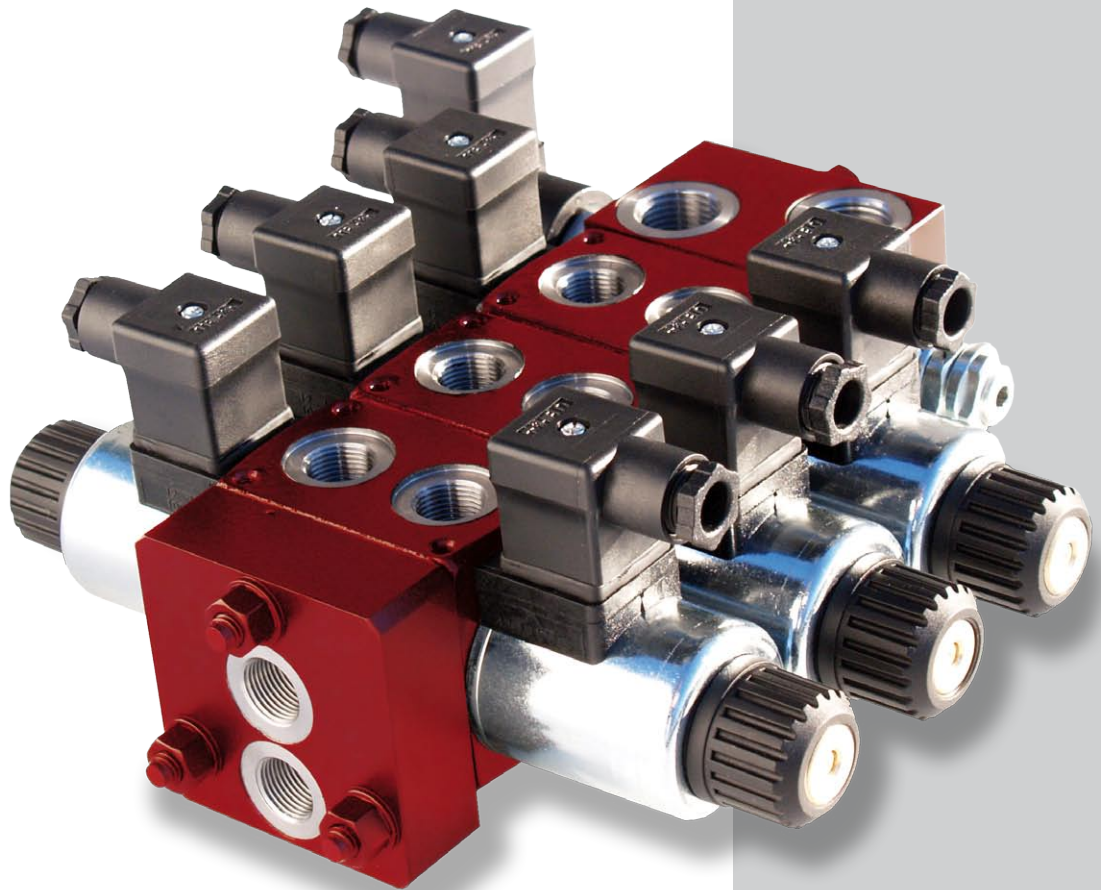
NEW

SDE030 SDE060 DLE060

Sectional directional control valves with
direct acting solenoid

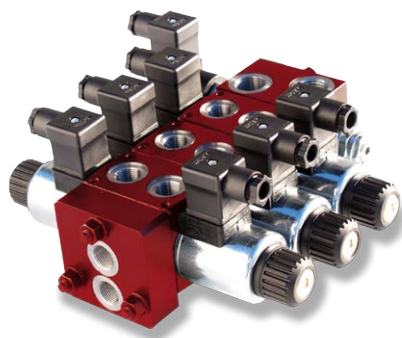


**A simple and flexible solution for
all the applications**



SDE030 • SDE060 • DLE060

Sectional direction



- ☐ Capable of high flows in a compact design
- ☐ Different types of inlet covers
- ☐ Different type of spools
- ☐ Different options to be flanged on the ports side
- ☐ Available for parallel, series and load-sensing circuits
- ☐ Emergency handlever available
- ☐ On/off and proportional controls
- ☐ Up to 8 sections

Walvoil is pleased to present this new series of directional control valves with direct acting solenoid: SDE030 • SDE060 • DLE060.

These valves have solenoid operated working sections that can be used in different types of circuits such as proportional flow control, load sensing and others.

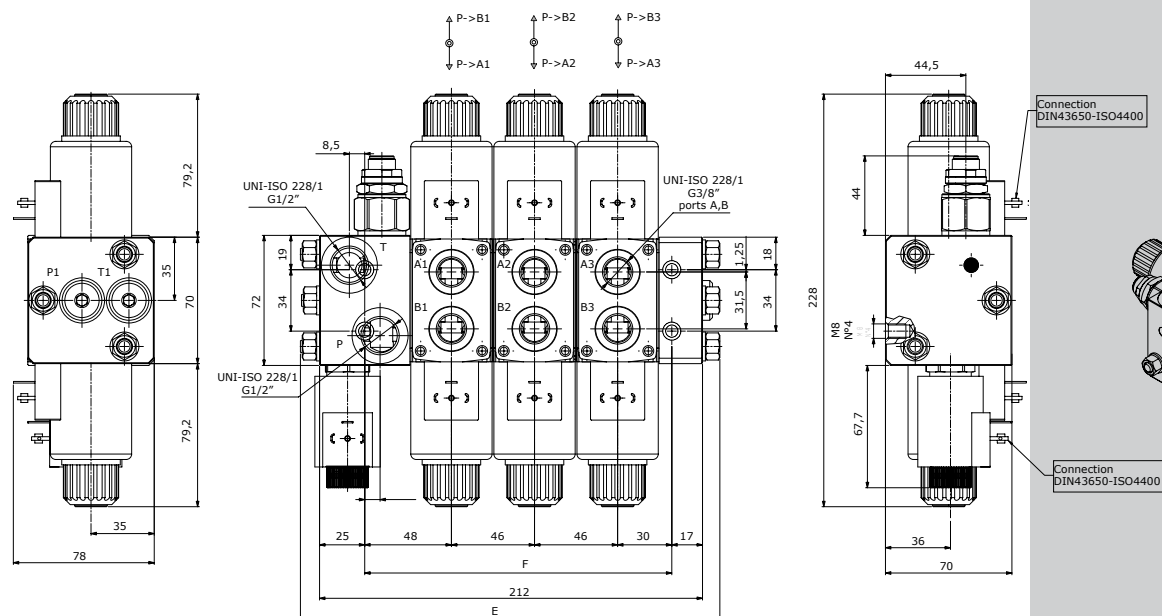
Working conditions of the series

Flow, max.	SDE030	30 l/min
	SDE060	60 l/min
	DLE060	60 l/min
Operating pressure, max.		315 bar
Back pressure, max.		210 bar
Fluid		Mineral oil
Internal leakage, max. at 100 bar and 40°C		14 cc/min
Viscosity	<i>min.</i>	12 cSt
	<i>max.</i>	400 cSt
Seal material		NBR
Fluid temperature range		from -20° to 80° C
Working temperature range		from -20° to 50° C
Contamination level, max.		19/16 ISO4406

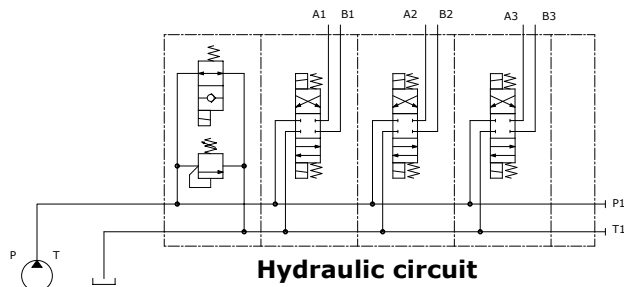
Specifications

Nominal voltages	12-24VDC
Nominal voltage tolerance	±10%
Power Rating	38 W
Duty Cycle	100%
IP Protection Rating	connector dependant
Coil insulation	class H

Dimensions



TYPE	E mm	F mm
SDE060/1	143	78
SDE060/2	189	124
SDE060/3	234	170
SDE060/4	281	216
SDE060/5	328	262
SDE060/6	374	308
SDE060/7	421	354
SDE060/8	465	400



Reference standard

		BSP	UN-UNF
Thread according to		ISO 228/1 BS 2779	ISO 263 ANSI B1.1 unified
Cavity dimension	ISO	1179	11926
according to	SAE		J2244
	DIN	3852-2 shape x or y	

Standard threads

Main	BSP	UN-UNF
Inlet P and outlet T	G 1/2	7/8-14 (SAE 10)
Inlet P1 and outlet T1	G 3/8	3/4-16 (SAE 8)
Ports A and B	G 3/8	3/4-16 (SAE 8)

Features

SDE030, SDE060, DLE060 are very flexible products with the following features:

- Sectional valves allow for easy assembly
- Custom inlet covers are available for the different applications
- Sections are arranged to easily add service valves (flanged to the port side of the section).

The heart of each product is the compact design, high flow, solenoid operated section.

The solenoids are available in both on/off and proportional, with or without emergency lever.

There are several spool options available allowing modification to the valve/circuit without complete disassembly.

There are sections available for the following circuit requirements:

- parallel
- series
- load-sensing.

Applications

This new series of directional valves can be used in many applications: aerial and all terrain platforms, tow trucks, truck cranes, boom mowers, sprayers and many others. They can be applied as both main function and as auxiliary function.

Configurations and options

Basic:

- Double acting, 3 position, normally closed/open in neutral position spools
- Single acting spools
- Series spools
- Parallel, series and load-sensing section configurations
- Inlet covers with main relief valve and solenoid unloader valve
- Inlet cover with main relief valve and compensated flow control with 3 way proportional manual/solenoid control;
- Inlet cover for load sense signal with compensator and main relief valve
- Flange mounted service valves available
- Solenoid 12/24 VDC proportional and on/off
- Emergency lever available.